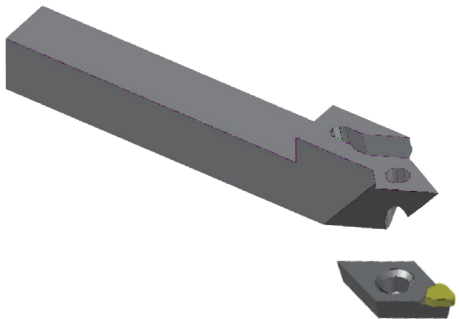
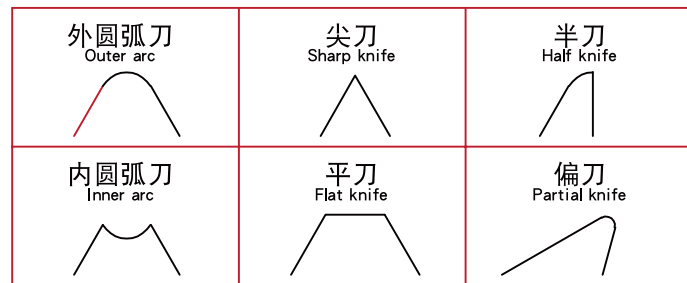


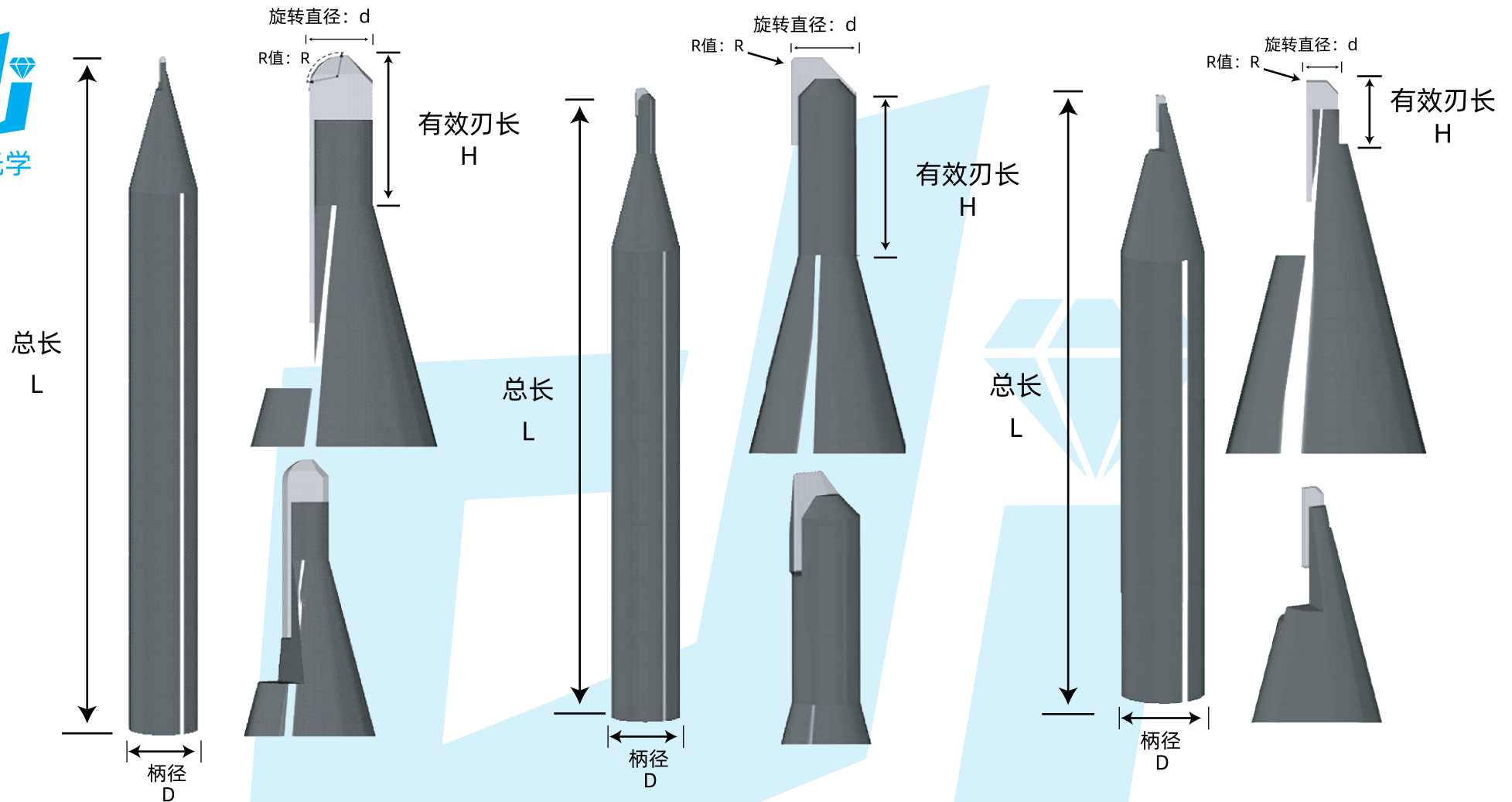
钻石类型 TYPE OF DIAMOND	刀具类别 TYPE OF DIAMOND	圆弧半径 Radius Size	夹角 Included	前角 Rake Angle	主后角 Primary Clearance	后角类型 Included	波纹度 Waviness
天然钻石 ND (Natural)	红外刀 H (Infrared Optical)	R010m=R0.1mm		G=10° H=8° J=5° K=3° L=0° M=-3° N=-5° R=-10° T=-15° W=-25° X=-30° Y=-35°	D=20° E=15° F=12° G=10° H=7° J=5° K=3°	V=Conical(圆锥) H=Cylindrical(圆柱)	D<250nm (精车) M>500nm (粗车)
人造单晶 MCD (Monocrystal)	模仁刀 M (Mold Machining)	X.XXm in mm	eg: 30° 60° etc				
化学气相 CVD (Chemical)	刀粒 D (Knife size)						
聚晶钻石 PCD (Polycrystal)							
立方氮化硼 CBN (Cubic)							

各种尺寸及角度的刀粒组装式刀杆



特征 (Feature)	可选择 (Optional)
半径R (Radius)	0.005mm to 1000mm
前角 (Rake)	-30° to +5°
主后角 (Primary)	3° to 30°
夹角 (Included)	15° to 180°
波纹度 (Waviness)	1000nm to 50nm





钻石类型 TYPE OF DIAMOND
天然钻石 ND (Natural)
人造单晶 MCD(monocrystal)
化学气相 CVD (Chemical)
聚晶钻石 PCD (Polycrystal)

刀具类别 TYPE OF DIAMOND
球头铣刀 Q/q(Ball head)
圆鼻铣刀 Y/y(Round nose)
底侧铣刀 D/d (Bottom side)

圆弧半径R Radius Size
2.0mm
1.0mm
0.5mm
0.3mm
0.1mm
X.XXm in mm

旋转直径d Rotation diameter
4.0mm
2.0mm
1.0mm
0.6mm
0.2mm
X.XXm in mm

有效刃长H Shank diameter
6.0mm
4.0mm
1.0mm
0.5mm
0.3mm
X.XXm in mm

刃数 Number of blades
1

总长L Total length
50mm
45mm
40mm
30mm
15mm
X.XXm in mm

特征 (Feature)
圆弧半径R (Radius)
旋转直径d (Rotation diameter)
有效刃长H (Shank diameter)
总长L (Total length)
柄径D (Shank Diameter)
柄材质 (Shank Diameter)

可选择 (Optional)
$0.05 \leq R \leq 100(\text{mm})$
$0.2 \leq d \leq 6.0(\text{mm})$
$0.2 \leq H \leq 15(\text{mm})$
$15 \leq L \leq 50(\text{mm})$
$3 \leq D \leq 12(\text{mm})$
硬质合金(Carbide) 工具钢(Tool Steel)